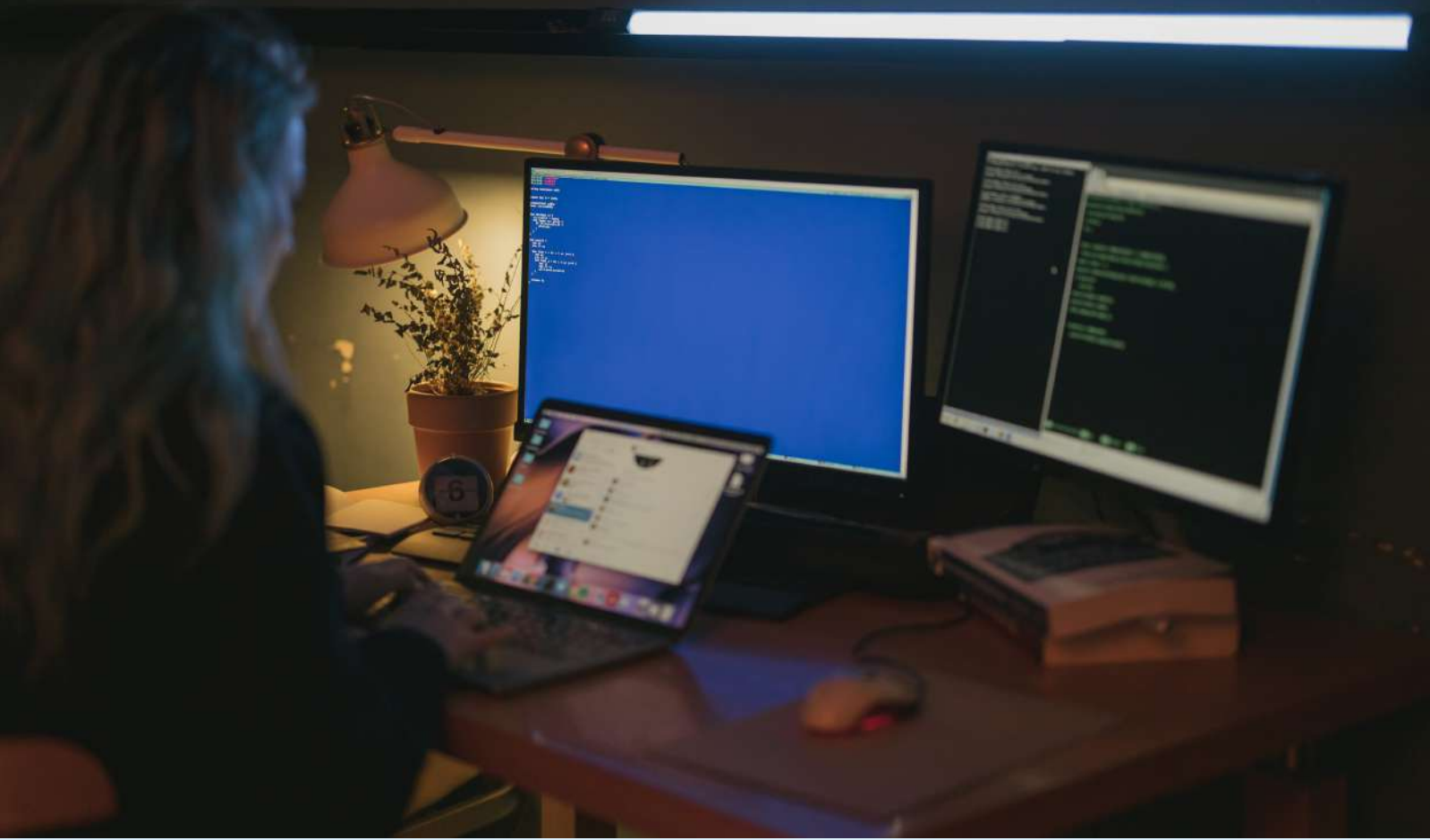


What is Selective Data Backup?



- Selective data backup is a type of backup process in which only the data, files, and folders specified by the user are backed up.
- The user has to manually select the desired data in the backup device before initiating the backup process.
- Selective data backup differs from incremental backup where only data or files modified after previous backup are backed up.

When is Selective Backup Performed?

- If user wants to backup only the important or critical data & files.
- If backup storage device has less capacity than required to accommodate full backup.

www.centextech.com

Centex Technologies



13355 Noel Road,
Suite # 1100, Dallas, TX 75240

Phone: (972) 375 - 9654

501 N. 4th Street,
Killeen, TX 76541

Phone: (254) 213 - 4740

1201 Peachtree St NE,
Suite 200, Atlanta, GA 30361

Phone: (404) 994 - 5074

Capital Factory, 701, Brazos
Street, Austin, TX 78701

Phone: (512) 956 - 5454